



LANCASTER COUNTY
COMMUNITY
FOUNDATION



2022

A GUIDE TO GRANT
OPPORTUNITIES &
RESOURCES

WE EMBOLDEN EXTRAORDINARY COMMUNITY

24 W KING ST, SUITE 201
LANCASTER, PA 17603

717 397 1629

LANCFOUND.ORG



If you've been tuned in to our work the past decade, you have heard us talking about building a Lancaster County embracing principles of diversity, equity, and inclusion – in other words, a community where ALL people are valued and supported so they can thrive.



IN FALL OF 2021, OUR
BOARD AND STAFF TOOK
ANOTHER STEP FORWARD
ON THIS JOURNEY. WE
FORMALLY ADOPTED OUR
ORGANIZATIONAL VALUES:

INTEGRITY
RELATIONSHIPS
EQUITY
INNOVATION
COURAGE



We have also arrived at

TWO BIG IDEAS

that will guide our work
over the next few years:

SUPPORTING BRIDGE
BUILDERS TO POSITIVELY
CONNECT DIVIDED GROUPS
WITHIN OUR COMMUNITY.

DEEPER UNDERSTANDING
AND INTEGRATION OF
EQUITY IN OUR WORK
AND IN OUR COMMUNITY.

These questions, we believe, are at the core of our community becoming even more extraordinary. Right now, it's easy to see all that divides us – things like politics, race, citizenship status, and social class. But we want to reverse the trend of intensifying division, bringing people closer to our work and to each other.

Through our new Bridge Builders grants, we will be challenging our community to innovate and courageously bring disparate groups of people together. Through new giving circles, we will partner directly with community members to build more influence and support for causes and communities that are important to them. We will continue to offer LEAP sessions that will challenge status quo assumptions about how Lancaster thrives, and ensure truly diverse perspectives are valued and amplified. Additionally, we are refining our regular grantmaking processes and the Extraordinary Give to bring equity into greater focus.

We hope you will join us on this journey! Dream with us. Plan with us. Fail with us. Learn from failure with us. Let's **SUCCEED** together as we create a Lancaster County where all can truly be valued and thrive as individuals in an extraordinary community.

ACTION & IDEAS

Use this as a quick reference guide to identify ways we might support your organization's goals, whether in the form of grants, learning, or endowment building. Additional information on all programs, as well as complete eligibility requirements and application information, can be found at LANCFOUND.ORG/GRANTS. Please note: the Community Foundation will not fund certain types of organizations and projects. Qualified organizations must submit a current audited or reviewed financial statement and non-discrimination policy to be considered for funding.

FOR MORE INFO ON GRANT
OPPORTUNITIES, CONTACT:



DAVE KOSER
DIRECTOR OF PROGRAMS
DKOSER@LANCFOUND.ORG
EXT. 112



FRAN RODRIGUEZ
SENIOR PROGRAM OFFICER
FRDRIGUEZ@LANCFOUND.ORG
EXT. 115



ALMA FELIX
PROGRAM OFFICER
AFELIX@LANCFOUND.ORG
EXT. 110



PASSION GRANTS

Start your application at
LANCFOUND.ORG/GRANTS

Projects that turn love of
community into lasting change

ADA F. HARR FUND

Up to \$32,300

For home health or custodial care for
people impacted by illness or disability.

KATHERINE K. GAETH FUND

Up to \$24,200

Funding for human service support
that provides a direct benefit to
clients, such as housing needs and
home modifications, utilities, home
care assistance, and food access.

ANNE C. & W. FRANKLIN RESSLER FUND

Up to \$28,900

For community projects based
in Eastern Lancaster County.

LANCASTER ENVIRONMENTAL FUND

Up to \$32,600

Supports environmental protection,
conservation, and education.

SAM AND VERDA TAYLOR FUND

Up to \$28,600

Supports the performing arts.

PATRICK KENNEY, JR. MEMORIAL EDUCATION FUND & K.L. SHIRK MEMORIAL FUND

Up to \$15,000

Supports programs that fight hate and
bigotry while promoting social justice.

FLORENCE STARR TAYLOR, LANCASTER ARTS AND CULTURE & ELOISE AURAND FUND

Up to \$15,000

Supports the visual arts.

BETTER LANCASTER FUND

Up to \$25,300

Supports early childhood development
from birth to age five.

JOHN J. SNYDER FUND FOR HISTORIC PRESERVATION

Up to \$105,000

For the “unglamorous things” necessary to
sustain documented historic structures.

**Separate application for this fund*

DUE DATES

Application Drafts Due for Feedback: **APR 22**

Letter of Intent (LOI): **MAY 13**

Final Application: **MAY 20**

Encouraging organizational self-reflection and growth in capacity

EQUITY & INCLUSION PROGRAM

Grants of \$25,000

CBOs will participate in a 9-month learning journey embedding equity practices to foster transformational growth and maximize community impact. The monthly workshops will offer opportunities for deep organizational and individual self-reflection through an equity lens, a guided internal equity audit to identify areas of need and building stronger relationships among CBO teams.

DUE DATES

Application Drafts Due for Feedback: **APR 22**

Letter of Intent (LOI): **MAY 13**

Final Application: **MAY 20**

CBO CAPACITY BUILDING

Grants of \$10,000

This grant supports projects to help achieve your CBO's mission. Examples include strategic planning, board and staff development, succession planning, marketing/development plans, collaborative ideas to create greater impact with another organization, enhance technology, etc.

DUE DATES

Application Drafts Due for Feedback: **JUN 24**

Letter of Intent (LOI): **JUL 15**

Final Application: **JUL 22**

BIG IDEAS

Start your application at
LANCFOUND.ORG/GRANTS

Emboldening strategies to shape the future of Lancaster County

NEW

COMMUNITY BRIDGE BUILDERS GRANTS

Grants of \$10,000–\$25,000

New for 2022! The Community Foundation is launching the Community Bridge Builders Program to support and promote visionary projects seeking to bring historically or recently divided groups into harmony with one another. In today's America, social media, the political landscape, and public discourse have become so polarized and tension between groups feels frightening and unsustainable.

Lancaster County is filled with creativity, compassion and caring. We challenge our county's CBO leaders to identify new programs to erase hate and prejudice, and to advance welcoming and appreciation of differing perspectives. The Community Bridge Builders Program will create bold pathways for all residents to manifest a brighter future – together.

PARTNERSHIP PROGRAM

Grants of up to \$20,000

Supports organizations in the process of forming a merger. Contact Dave Koser to discuss the status of your merger and information about applying.

Rolling Application Timeline

DUE DATES

Application Drafts Due for Feedback: **JUN 24**

Letter of Intent (LOI): **JUL 15**

Final Application: **JUL 22**

PARTNER OPPORTUNITIES



THE LANCASTER CLEAN WATER FUND

COMMUNITY CONSERVATION GRANTS

Grants of \$1,000–\$15,000

Supports education, outreach, and regional engagement projects that improve Lancaster's water quality through collaboration and creativity.

CLEAN WATER IMPLEMENTATION SMALL GRANTS

Grants of \$5,000–\$25,000

Supports implementation of collaborative, watershed-scale restoration projects that encourages diverse audiences to improve Lancaster's water quality at a rapid pace.



HIGH FOUNDATION FUND

In 2021, the High Foundation Fund was established with an extremely generous \$65 million gift from the High Foundation.

As a donor-advised fund, grants are made at the discretion of, and aligned with the grantmaking principles of, the High Foundation.

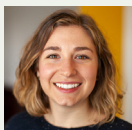
Learn more and apply at HighFoundation.org

DUE DATES

Application Drafts Due for Feedback: **JUN 24**

Final Application: **JUL 22**

Learn more and apply at LancFound.org/Grants



EMILY SMEDLEY

COMMUNICATIONS AND
PROGRAM MANAGER, LCWP
717-598-6111

ESMEDLEY@LANCASTERCLEANWATERPARTNERS.ORG

FREE FUEL

LEAP Sessions Open to the public!

Inspire bold new thinking with these free, powerful learning opportunities centered around achieving equity and inclusion in our community. Attend as many of these events as you can! Learn more and register at lancfound.org/LEAPSessions

All sessions will be held remotely via Zoom from 12:00 – 1:30pm until further notice.

APRIL 15

The Fundamentals of Relationship Fundraising

Mark Duncan, Fundraising Coach,
The Fund Coach, LLC

JULY 15

Achieving Equity When Implementing Workplace Policies

Jessica Purdy, CEO & Founder, FIC Human
Resource Partners

MAY 20

Grasping at the Root: We Must Continue Advocating for Equity, Inclusion, and Belonging

Dr. Amber Sessoms, Principal and Founder,
Natural Inclination, LLC • Adam Hosey, Chief
Equity Officer, YWCA Lancaster

AUGUST 19

Success, Regardless of Immigration Status

David Cazares, pre-med and undocumented
student, Franklin & Marshall College • Clinical
Research/Medical Assistant, Center for
Interventional Pain & Spine

Watch recordings & access resources from all sessions since 2020 at LANCFOUND.ORG/LEAPSESSIONS





More than a Meet Up

Be part of one of our community-driven affinity groups. Connect, learn, and share with colleagues and professionals generating new ideas and testing new opportunities for making our community benefit sector stronger. Free ranging and organic gatherings!

DEVELOPING LANCASTER

Especially for individuals working in development, advancement, donor relations and fundraising.

CONTACT ASHLINN MASLAND-SARANI amaslandsarani@lancfound.org

COMM'A LANCASTER

Designed for the communications, marketing, and advertising members of your team.

BELOVED COMMUNITY

Drawing on your CBO's ideas to cultivate individual & organizational practices of equity and belonging.

CONTACT FRAN RODRIGUEZ frodriguez@lancfound.org

EXECUTIVE CONNECTION

Designed for CBO executives, this group explores best practices in leading organizations through today's challenges. **CONTACT TRACY CUTLER** tcutler@lancfound.org

SAVE
THE
DATE!

THE EXTRATM ORDINARY GIVE



Rodgers & Associates
REALTOR ASSOCIATES



NOVEMBER 18, 2022

#EXTRA



THANK YOU FOR BEING PART OF THE EXTRAORDINARY GIVE!

After 10 24-hour events, our community has raised more than **\$82 MILLION** supporting your organization and causes across Lancaster County. Together, we have cultivated a platform that energizes our community and highlights opportunities for progress.

As we look forward, we will continue to leverage the Extra Give to share our Community Foundation values and embolden an environment where all people can thrive.

We will work with you to inspire giving for today and tomorrow, invite even more donors to engage, and create an experience that is bigger than any one of us. Together, we are building extraordinary community.



TRACY CUTLER

EXECUTIVE VICE PRESIDENT
TCUTLER@LANCFOUND.ORG



FOREVER LANCASTER

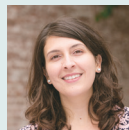
YOUR LEGACY.
OUR COMMUNITY.

FUNDRAISING CAN BE UNPREDICTABLE IN A 'TYPICAL' YEAR, and over the past two years our incredible community benefit organizations reimagined how you held events, met with donors, and fundraised, all while meeting community needs.

WHAT does this HAVE TO DO with ENDOWMENTS?

Endowments are a tool for sustainable, long-term funding; when other fundraising rises and falls, endowments steadily provide increasing funds each year for your organization.

INTERESTED IN OPENING AN ENDOWMENT?



**ASHLINN
MASLAND-SARANI**

**DIRECTOR OF
FOREVER LANCASTER**

AMASLANDSARANI@LANCFOUND.ORG

WHAT is an ENDOWMENT?

A tool for your organization's long-term sustainability.

Endowments are assets (cash, stocks, real estate, and more) that are donated to your community benefit organization, with the expectation that the principal is not spent and is invested to earn interest. At the Community Foundation organizations can access 4% in funding from their endowment each year.

HOW CAN an ENDOWMENT BENEFIT your ORGANIZATION?

To provide consistent, long-term funding for your organization.

Endowments provide consistent, long-term funding for your organization. It can be attractive to donors as an indication of financial stability. Endowments can also be a natural way to talk with donors about legacy gifts. Other funding can be inconsistent, depending on state and federal budgets or fundraising success.

Generational changes mean that a significant wealth transfer is happening in Lancaster. This presents a unique opportunity to talk with donors about giving now and for the future sustainability of your organization and our community.

WHAT is the BENEFIT of HAVING an ENDOWMENT with the Lancaster County Community Foundation?

We're your partner in giving.

We're your partner and on your team when it comes to sustainability. We offer the ease of accepting a range of assets, reduced reporting requirements, deep community connections, oversight of investments, and publicity of your endowment through the Foundation's website and social media. The Foundation also offers learning opportunities and resources specifically for endowment holders.

ESG POOL

Environmental, Social, Governance

A specialized option for socially-minded investors, our ESG Investment Pool invests specifically in companies that have a positive tilt towards Environment, Social and Governance best practices. The pool includes investment in companies that commit to principles like using renewable energy, paying a thriving wage, or having a Board with significant female leadership.

ONE FURTHER BENEFIT: FLEX FUNDS

Organizations that have an endowment with the Community Foundation of \$50,000 or more can open a Flex Fund. This type of fund is similar to an endowment in that it's invested and can accept a range of assets. However, the entire amount in a Flex Fund is available to an organization - making it ideal for longer-term expenses.

CONNECT WITH US!

**YOUR THOUGHTS AND IDEAS MAKE OUR
WORK POSSIBLE. WE'RE EXCITED TO
WORK WITH YOU ON EMBOLDENING OUR
EXTRAORDINARY COMMUNITY TOGETHER!**

24 W KING ST, SUITE 201
LANCASTER, PA 17603

717 397 1629

LANCFOUND.ORG

